

QUALITY IRRIGATION
PRODUCTS

2920 Airway Ave, Costa Mesa, Ca. 92626
phone: 714.437.9600 fax: 714.437.9700



FINAL DRIVE GEARBOXES



Model Numbers:

- ➔ 740 - U 50:1
- ➔ 740 -UV 52:1

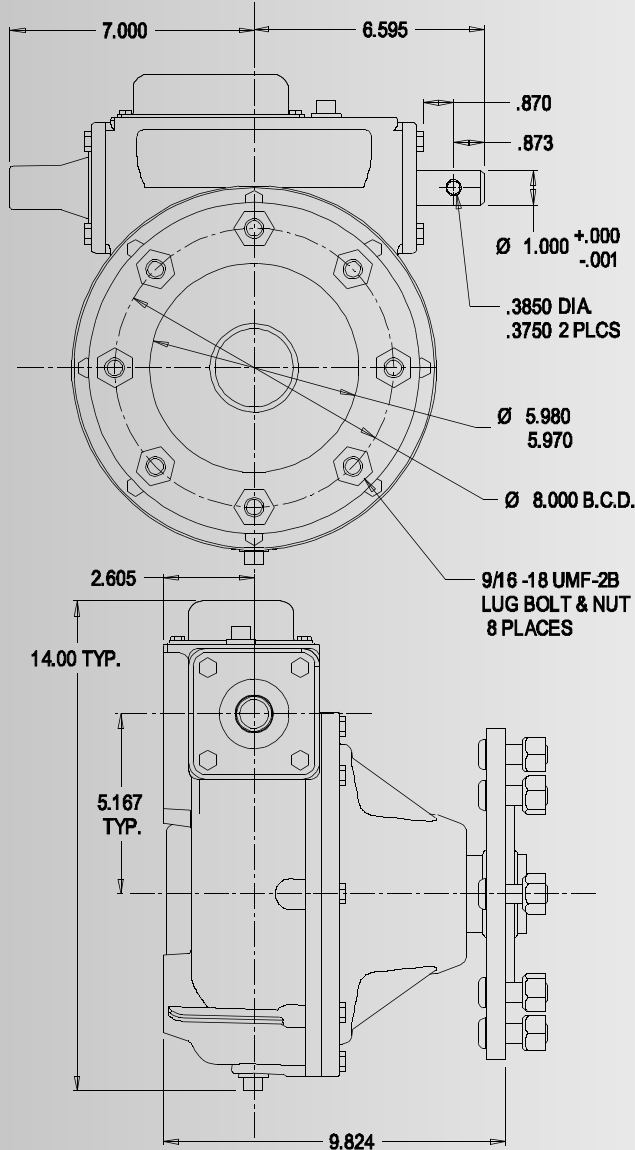
Evaluation Specification:

- ★ New Dual output seals standard.
- ★ Larger input bearings and reinforced housing.
- ★ Stainless steel expansion chamber.
- ★ Universal mount bolt pattern.
- ★ Full cycle expansion chamber; bellows-type expansion diaphragm.
- ★ Tapered roller bearings.
- ★ 50:1 worm gear ratio, UV 52:1 : Various over-hung load capacities.
- ★ High strength cast iron bolt-on end caps.
- ★ Input shafts fitted with external UV resistant dust seals.
- ★ Dual input seals.
- ★ Includes rib neck carriage bolts with wheel nuts.
- ★ Each gearbox filled with extreme pressure, multi-purpose gear oil.
- ★ Top oil fill provision.
- ★ Each unit date stamped.
- ★ High strength steel worm and output shaft.
- ★ Input shaft guard included.

CONTACT UMC AT SALES@UMCPRODUCTS.COM

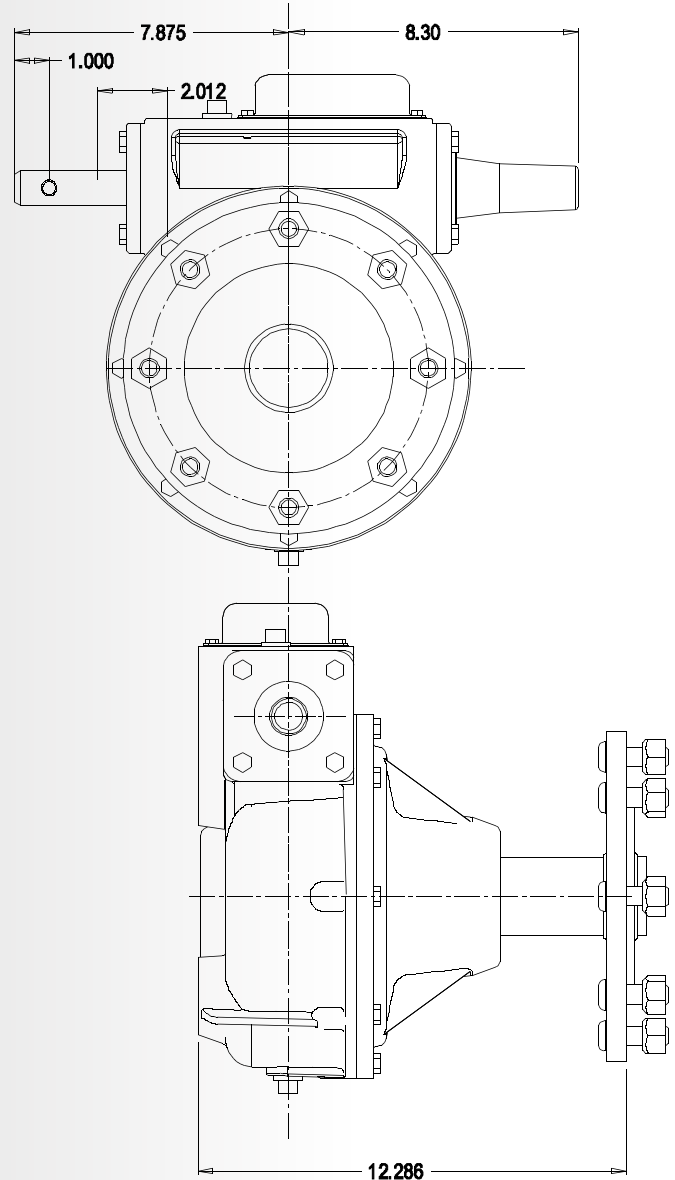
Dimensional Drawing Final Drive Gearboxes

Model: 740-U



Universal mounting bolt pattern fits most Lindsay, Reinke, and Lockwood systems.

Model: 740-UV



Mounting bolt pattern fits Valmont systems.

CONTACT UMC AT SALES@UMCPRODUCTS.COM



Universal Motion Components, Co. Inc.
2920 Airway Ave, Costa Mesa, Ca. 92626
Phone: 714.437.9600 Fax: 714.437.9700
Web: <http://www.umcproducts.com>
E-mail: sales@umcproducts.com