

UNIVERSAL MOTION COMPONENTS

QUALITY IRRIGATION PRODUCTS

ISO 9001:2000 CERTIFIED

2920 Airway Ave, Costa Mesa, Ca. 92626
phone: 714.437.9600 fax: 714.437.9700



ALIGNMENT DRIVE LINE COUPLER

Evaluation Specifications

- ★ Same great load arms and urethane insert as the standard coupler with the addition of an alignment rod.
- ★ Alignment rod hold insert in place and coupler in alignment under extreme or sudden loads.
- ★ Designed for use in extreme duty environments: heavy soils, Larger tire diameter, Higher torque motors, and stronger gearboxes.
- ★ Designed and tested under extreme loads to ensure coupler failure and prevent damage to gearbox.
- ★ 70% increase in load carrying abilities.
- ★ Urethane insert offers an environmentally stable insert with better resistance to UV rays and chemicals.
- ★ Grooved insert option converts any coupler assembly for a towable application.
- ★ UMC designed SQUEX bolts allow easy access to tighten nuts and creates unique bolt anti-rotation feature.
- ★ 75,000 PSI high strength bolts and prevailing torque type nuts.
- ★ High torque conditions compress inserts instead of shearing them.
- ★ Shock attenuation insert allows for softer starts and stops.
- ★ Ideal for high-torque, slow-speed conditions with severe back driving.
- ★ Curved pressure pads compensate for out of line conditions.
- ★ One year limited warranty.

with the new higher torque, longer life urethane insert and keeper pin included

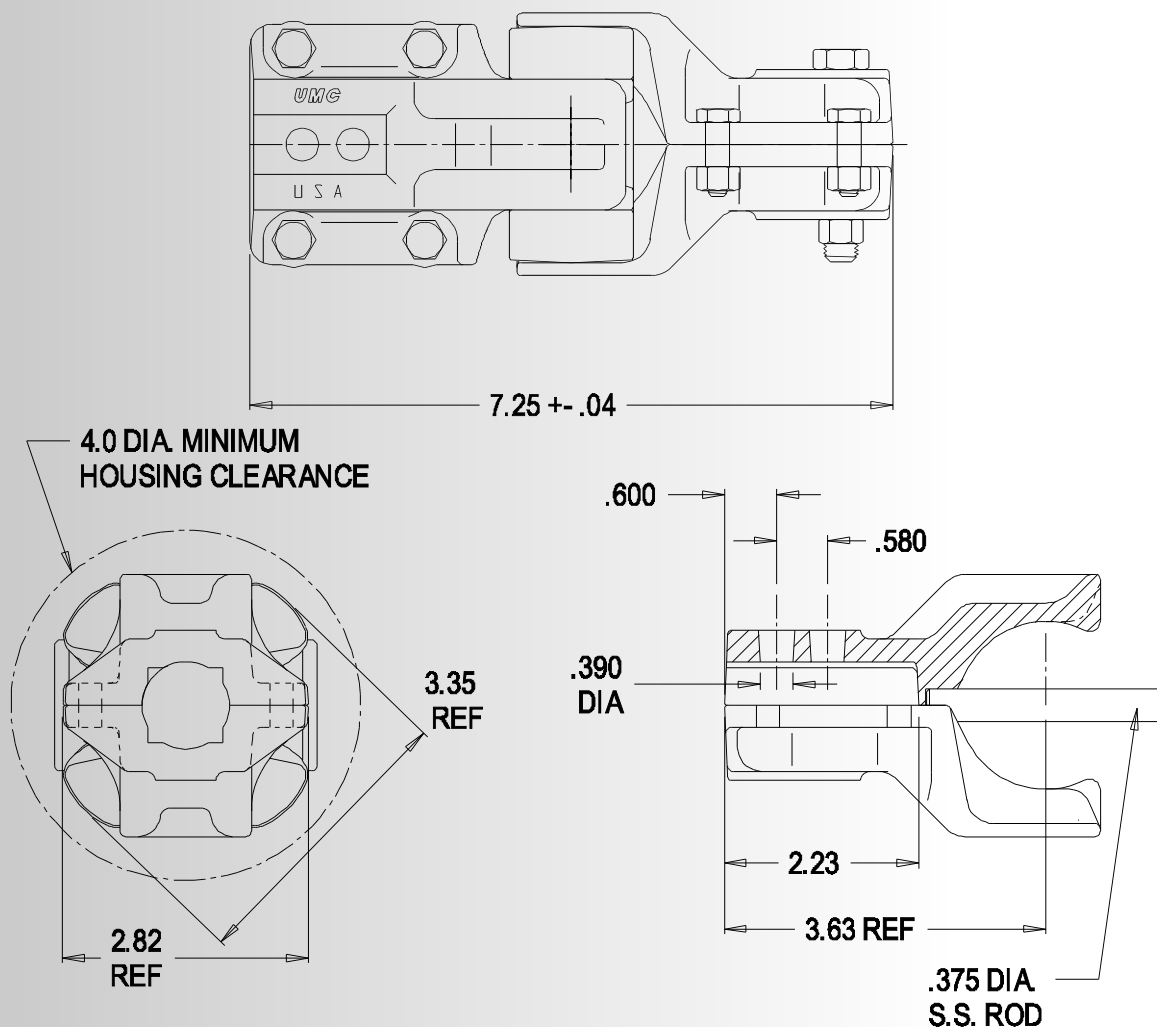


Model Numbers:

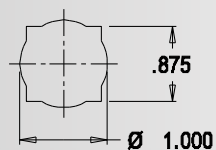
→ O21-A	1" rd. & 7/8" sq.
→ O21-G	1" rd. & 7/8" sq. x 1 1/8" rd & 1" sq.
→ O21-M	1" rd. & 7/8" sq. (tow)

CONTACT UMC AT SALES@UMCPRODUCTS.COM

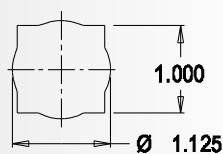
Dimensional Drawing
Drive line Coupler



Available shaft configurations



#1 A



#8 G

CONTACT UMC AT SALES@UMCPRODUCTS.COM



Universal Motion Components, Co. Inc.
2920 Airway Ave, Costa Mesa, Ca. 92626
Phone: 714.437.9600 Fax: 714.437.9700
Web: <http://www.umcproducts.com>
E-mail: sales@umcproducts.com